

1

Detroit Dental Health Project

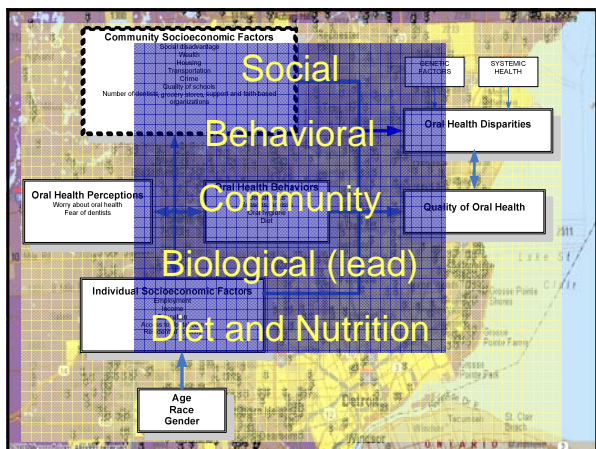
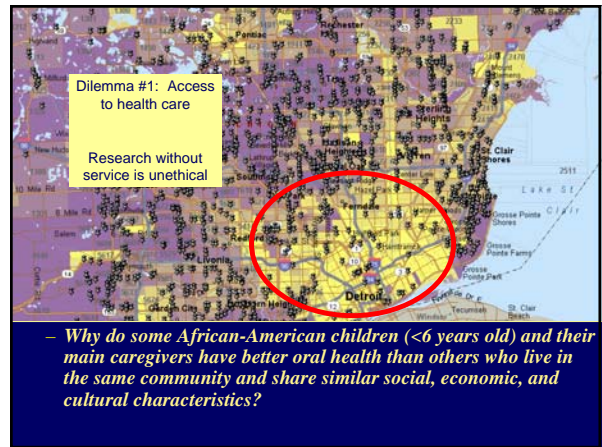
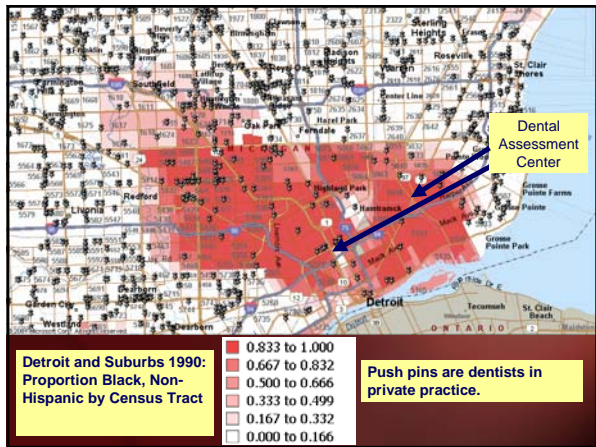
Detroit Oral Cancer Prevention Project

Both are funded by NIH/NIDCR
Delta Dental Fund of Michigan
University of Michigan, OVRP/School of Dentistry

2

Dental Health?

- Access to dental care is one of the top health issues that have consistently been identified by participants in focus groups in Detroit.
- There is a weak dental safety net in Detroit and the nation.
- Impact of dental health on quality of life is significant.
- We are the same; we desire to be socially accepted, respected, and not discriminated against because of our physical appearance, skin color, origin, language, and other physical or personal characteristics.



6

Project Values

Do you care about me?

Or your publications?

7 **Project Values**

Staff
 – Hire staff from the community



8 **Virtues Necessary for Community-based Research**

- Commitment
- Quality
- Honesty
- Caring

Community-centric rather than investigator-centric

9

Understand before you act!

Phase I: Understand
 Phase II: Intervene
 Phase III: Evaluate and plan for interventions

10 **Methods: Detroit Dental Health Project**

- **Sample**
 - Approximately ~ 14,600 housing units were listed.
 - ~ 12,600 were contacted
 - 1,386 eligible families were scheduled for interviews and examination
 - 1,021 were examined and interviewed
- **Response rates**
 - Contact rate: 91.5%
 - Of the 1,386 eligible families, 73.3% completed Phase I.
- **Phase II**
 - 791 families were examined (77.9%)

11 **Why?**

- Treat people well, and they will respond
- Dental care
- Birthday cards
- Holiday cards
- Take care of their dental problems
- Newsletters
- Staff committed to the families



13

Results?

- Dental caries (tooth decay) was detected in children at very early age.
- By the age of 2, 1 in 5 of the children had at least one cavity.
- Most of the disease though is in the pre-cavitated (early) stages and can be prevented through simple measures.
- There is significant lack of knowledge on the importance of baby teeth as well as behavioral practices that could prevent dental caries.

14

Results?

- 54% of the total calories consumed by 3-5 year olds were from sugary fluids.
- In these children the correlation between daily consumption of soda pop and crackers, potato chip and similar foods items was high.
- Teeth were extracted in relatively high numbers, especially after the age of 45 years.
- Among adults, soft drinks and potato chips were the 2nd and 3rd most commonly consumed food items.
- One third of the caregivers were depressed.

15

Results?

- 45% of the adults had BMI of 30+.
- 11% of children, 2-6 years old, were overweight.
- There were correlations in caries prevalence/severity between the children and their caregivers.
- 41% of the caregivers reported that they were current smokers.

16

You Can Keep Your Child Free from Tooth Decay

- Educational program
 - DVD developed with the families using their own responses
 - Motivational interviewing
 - Brochures
 - Free toothbrushes
 - Free dental care
 - Over 40% have seen the dentist working for the DDHP

17

Oral cancer

- African-Americans in Wayne County had
 - highest incidence and mortality rates in the state.
- African-American men in Detroit had
 - highest incidence rate in the country.
- Residents of Detroit, regardless of race, had
 - high incidence and mortality rates compared with other locations in the state.
- African Americans in Detroit
 - developed cancer at an earlier age than other groups.

18

Oral cancer

- Between 1993 and 2002, there was a clinically significant drop in incidence rates in the state and Detroit.
- However, there was an increase in mortality rates in Michigan and Detroit between 2000 and 2002.

19

Oral cancer

- **Low (28.3%) early detection rate in Detroit.**
- **In 2002, African-Americans in Michigan had a 5-year survival rate of**
 - 34.9%
 - state average was 54.6%

20

Oral cancer: Action?

- **Early detection saves lives**
- **Encourage providers to screen for oral cancer. Did not work!**
- **Media campaign: Pull-push approach**
 - Radio (prime time)
 - Billboards
 - Health educators:
 - community/faith-based organizations
 - Toll free number (NSO) 1-877-7-checked

21

Oral cancer: Action?

- **Screening clinic: free**
- **Biopsy service: free**
- **Surgery: direct and friendly**
- **Support to apply for Medicaid**
- **~800 calls since April 2005**
- **Over 400 screened**
- **~40 referred for biopsies**
- **4 adults with oral cancer; 3 early, 1 advanced (non-operable)**

22

Take Home Messages

- **We need to develop integrated and comprehensive models to reduce disparities and the economic and racial segregation that exists in SE Michigan.**
- **People and the community must directly benefit from the research.**
- **Research for Community-based Outcomes (R-COD)**